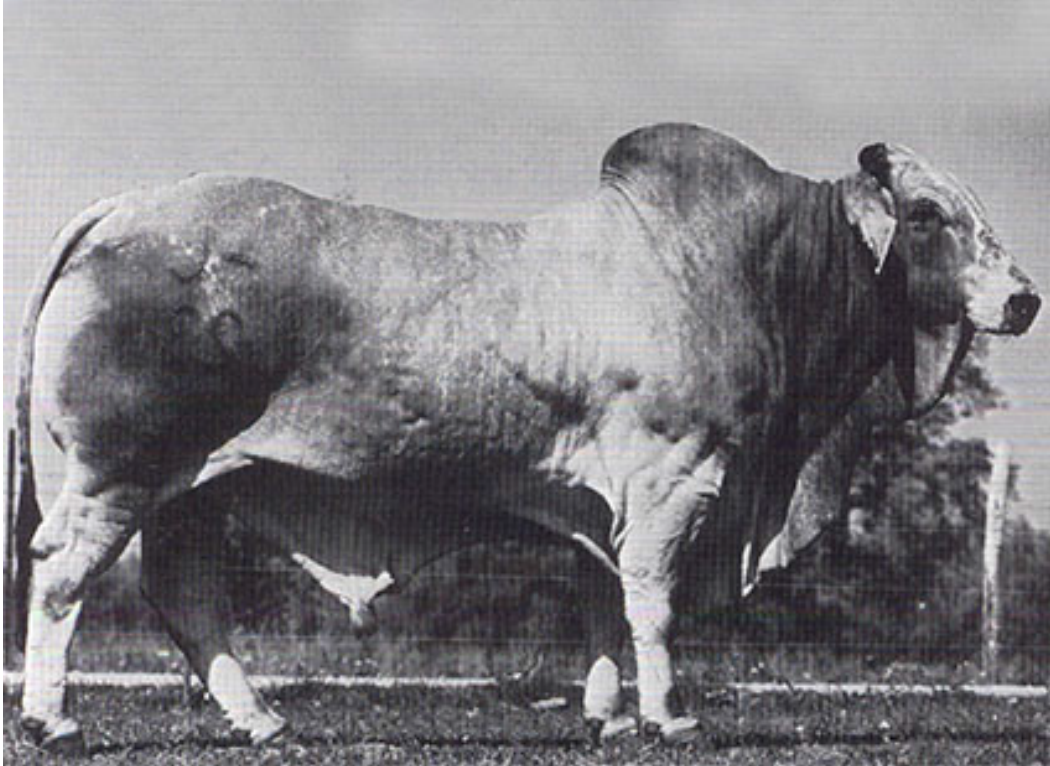


## STINGER K231



SIMBRAH										
	CE	BW	WW	YW	Milk	MM	MCE	CW	MWW	MB
EPD		0.3	-10.1	-26.1	4.6				-0.4	
ACC		0.76	0.75	0.74	0.69				0.70	

Reg#: 550698  
DOB: 06/05/1978

SI550698  
Tattoo: K231

Sire:: Florian  
YSR Florian 136D

Florian  
456

Dam:: Miss Yancey 61

Barzees 924  
Cow Moos 176

✓ Especial para usar sobre vacas Simmental para producir Simbrah puro.

✓ Sires big boned, deep bodied, loose made performance cattle.